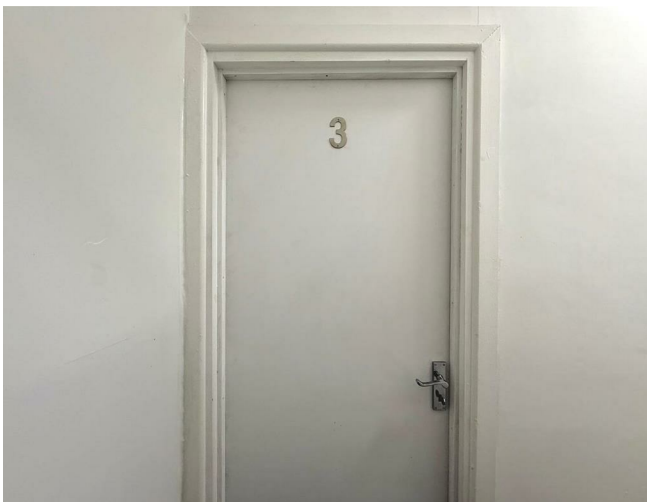


Flat 3, 159 Westminster Road, Morecambe, LA3 1SJ



£575 Per Month

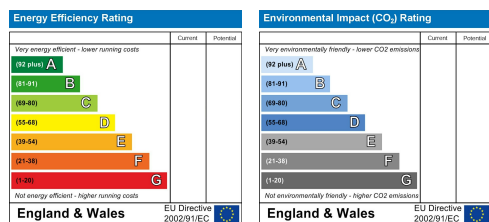
AVAILABLE NOW!

A bright and spacious two-bedroom top-floor flat situated on Westminster Road, Morecambe. This well-presented property offers modern living in a convenient location, just a short distance from local shops, transport links, and Morecambe's stunning seafront.

Inside, you'll find a generous lounge with plenty of natural light, a modern fitted kitchen, two bedrooms, and a well-kept bathroom.

Ideal for professionals or couples seeking a comfortable home close to amenities.

Contact us today to arrange a viewing!

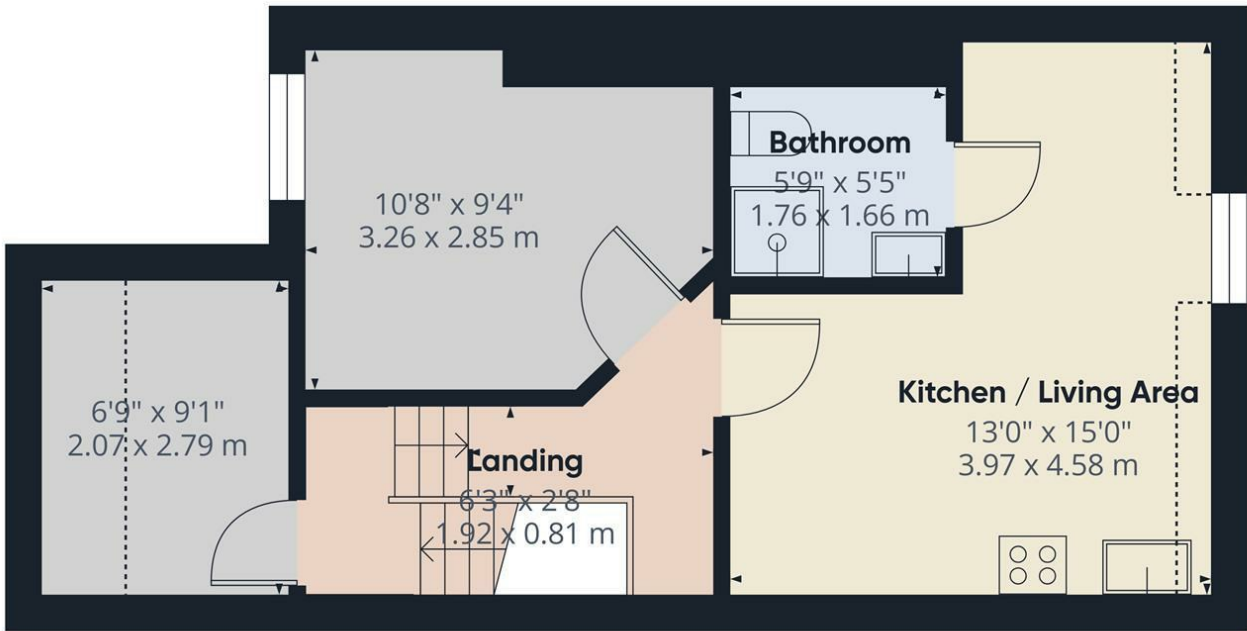


Head Office: 83 Bowerham Road Lancaster LA1 4AQ
 T 01524 548888 E enquiries@mightyhouse.co.uk W www.mightyhouse.co.uk



the mark
of property
professionalism
worldwide

Mighty House is a trading name of P&PC Surveyors Limited. Registered Office: 70 Daisy Hill, Dewsbury, WF13 1LS. Company no: 06498054



Approximate total area⁽¹⁾
363 ft²
33.8 m²

Reduced headroom
29 ft²
2.7 m²

(1) Excluding balconies and terraces

Reduced headroom
Below 5 ft/1.5 m

Calculations reference the RICS IPMS 3C standard. Measurements are approximate and not to scale. This floor plan is intended for illustration only.

GIRAFFE360



Head Office: 83 Bowerham Road Lancaster LA1 4AQ
T 01524 548888 E enquiries@mightyhouse.co.uk W www.mightyhouse.co.uk



Mighty House is a trading name of P&PC Surveyors Limited. Registered Office: 70 Daisy Hill, Dewsbury, WF13 1LS. Company no: 06498054